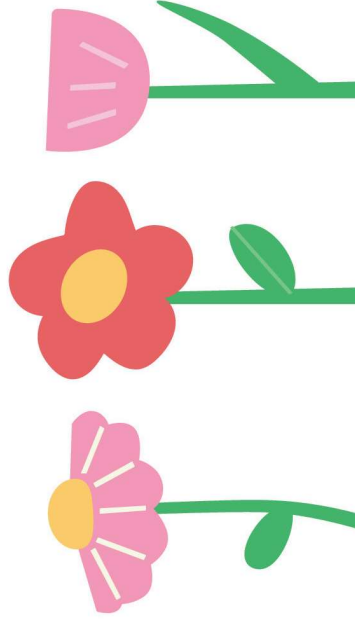




- A child's development is rapid in the first three years.
- A great deal of learning takes places during this time.
- Some children who are behind in their development need extra help.
- The Birth to 3 Program is one way to provide this help.



How Does It Work?

Anyone can refer a child to the Birth to 3 program by calling 715-232-1116: parents, relatives, friends, educators, doctors. A Birth to 3 Teacher will then contact the child's parent to evaluate the child's strengths and abilities to determine if the child is eligible for services.

Our Birth to 3 Team includes Early Childhood Teachers, an Occupational Therapist, a Physical Therapist and a Speech Therapist.

FOR MORE INFORMATION OR TO REFER A CHILD TO OUR PROGRAM, PLEASE CONTACT US:

Contact:

- 📍 Dunn County Human Services
3001 US Hwy 12 E, Menomonie
- 🌐 <https://www.co.dunn.wi.us/birthto3>
- ✉ cneidermyer@co.dunn.wi.us
- ☎ 715-232-1116



SCAN QR CODE FOR MORE INFO



Early intervention to support your child's development and growth



* What is the Birth to 3 Program?

- Birth to 3 is an early intervention program to identify infants and toddlers who have special needs or delayed development. Every county in Wisconsin has a Birth to 3 Program.
- Dunn County Birth To 3 staff work in partnership with parents to identify goals and outcomes for their child and family which will support the child's ability to grow, learn, and communicate by providing opportunities for children to participate in peer group activities and connect the family to other resources.



* Who We Help

- The Birth to 3 Program is for children ages birth to 36 months. Eligibility is based on a diagnosed disability or significant delay in one or more areas of development.
- A team of child development specialists evaluates a child's ability to:
 - Learn
 - Move
 - See and hear
 - Communicate
 - Respond and relate to others
 - Perform daily living activities

MILESTONES

3 Months

- Lifts head when placed on tummy
- Smiles and laughs
- Makes sounds when talked to
- Looks at hands and plays with fingers
- Stares at movement & light
- Likes to be held & rocked
- Reaches & feels with open hands
- Rolls from stomach to back
- Sits with support
- Makes sounds like ba, da, ma
- Reaches for, holds & shakes toys
- Brings hands & toys to mouth
- Turns head in direction of sounds
- Kicks & laughs
- Looks at faces
- Recognizes familiar people

6 Months

- Crawls on belly
- Sits alone well
- Finger feeds
- Waves bye-bye
- Plays pattycake & peek-a-boo

9 Months

- Pulls up to & walks along furniture
- Gets down from standing
- Follows some simple directions (come here, give it to me)
- Looks at objects & people when named (bottle, doggy, mama, daddy)

12 Months

- Walks alone, climbs onto furniture
- Knows some body parts (ear, nose, eyes)
- Drinks from a cup
- Has 20-30 word vocabulary
- Gets into everything
- Turns pages of a book one at a time
- Plays well with a variety of toys

18 Months

- Points to pictures when asked
- Uses 50 or more words
- Puts words together
- Runs
- Brings objects from another room when asked
- Eats with a spoon

24 Months

- Names many pictures & objects
- Jumps with both feet off the floor
- Uses sentences of 3 or more words
- Asks questions
- Enjoys painting, coloring & play dough
- Sing songs & repeats rhymes
- Kicks a large ball
- Walks up and down stairs

30 Months